

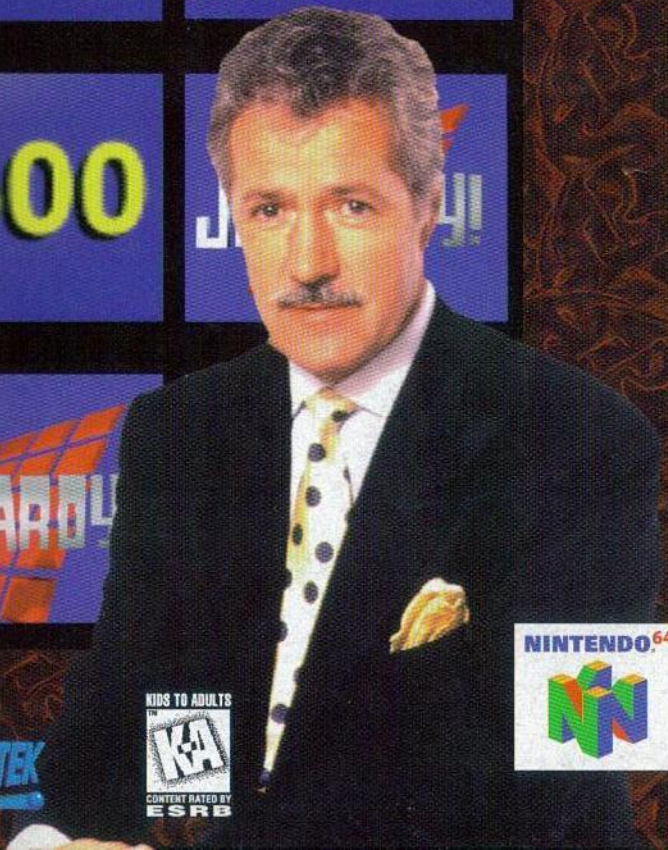
J E O P A R D Y ![®]

\$400 \$400

INSTRUCTION BOOKLET

\$600

J E O P A R D Y !



SOLD BY

GAMETEK

KIDS TO ADULTS



CONTENT RATED BY
ESRB

NINTENDO⁶⁴



WARNINGS AND CONSUMER INFORMATION

WARNING: PLEASE CAREFULLY READ THE CONSUMER INFORMATION AND PRECAUTIONS BOOKLET INCLUDED WITH THIS PRODUCT BEFORE USING YOUR NINTENDO® HARDWARE SYSTEM, GAME PAK OR ACCESSORY. THIS BOOKLET CONTAINS IMPORTANT SAFETY INFORMATION.

THIS PRODUCT HAS BEEN RATED BY THE ENTERTAINMENT SOFTWARE RATING BOARD. FOR INFORMATION ABOUT THE ESRB RATING, OR TO COMMENT ABOUT THE APPROPRIATENESS OF THE RATING, PLEASE CONTACT THE ESRB AT 1-800-771-3772.

THE OFFICIAL SEAL IS YOUR ASSURANCE THAT NINTENDO HAS APPROVED THE QUALITY OF THIS PRODUCT. ALWAYS LOOK FOR THIS SEAL WHEN BUYING GAMES AND ACCESSORIES TO ENSURE COMPLETE COMPATIBILITY. ALL NINTENDO PRODUCTS ARE LICENSED BY SALE FOR USE ONLY WITH OTHER AUTHORIZED PRODUCTS BEARING THE OFFICIAL NINTENDO SEAL OF QUALITY.



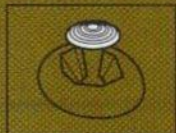
LICENSED BY NINTENDO
NINTENDO, THE OFFICIAL SEAL, NINTENDO 64 AND
THE 3-D "N" LOGO ARE TRADEMARKS OF NINTENDO OF AMERICA INC.
©1996 NINTENDO OF AMERICA INC.

The Nintendo 64 Controller contains a Control Stick which uses an analog system to read the angles and direction of its movement. This allows subtle control that is not possible using the conventional + Control Pad.

When turning the Control Deck power ON, do not move the Control Stick from it's neutral position on the controller.



If the Control Stick is held at an angled position (as shown in the picture on the left) when the power is turned ON, this position will be set as neutral. This will cause games using the Control Stick to operate incorrectly.



To reset the neutral position once the game has started, let go of the Control Stick so it can return to its center position (as shown in the picture on the left) then press start while holding the L and R Buttons.

The Control Stick is a precision instrument, make sure not to spill liquids or place any foreign objects into it.

We recommend position "C" for this game.

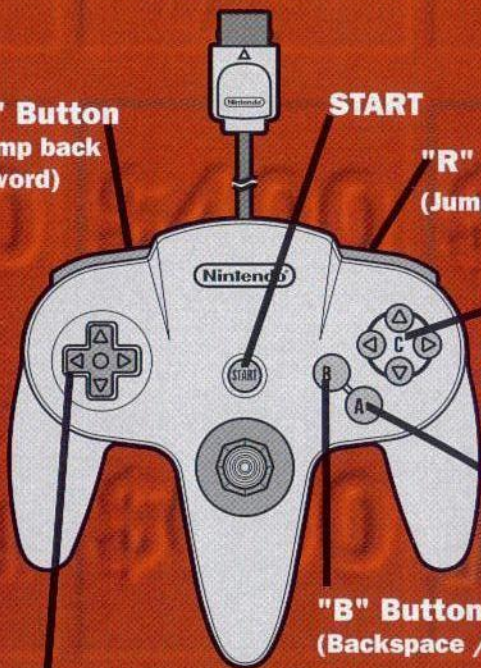


N64 Controller™

"L" Button
(Jump back
1 word)

START

"R" Button
(Jump ahead 1 word)



"C" Buttons
(Misc. Characters)
See Page 11 for
details

"A" Button
(Buzz in / Select)

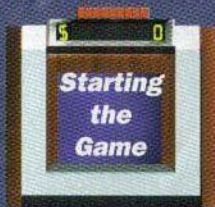
"B" Button
(Backspace / Go Back)

"Control Pad"
(Moves cursor)

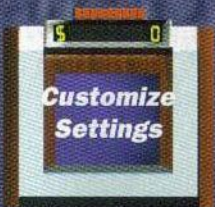
Back of Controller



"Z" Button
(Buzz in /
Select)



Insert Game Pak into the N64 Control Deck and move the power switch to ON.



Change your customized settings by highlighting the desired settings box with the arrow buttons on the control pad then press the "A" or "Z" button to select. If you wish to accept the default settings, you will only be presented with the "easy" answers and questions (about one-third of the entire database) and players will be able to match their responses to entries supplied by the computer.



COMPUTER OPPONENTS SKILL LEVEL

Choose between "EASY", "AVERAGE" and "EXPERT" skill levels by highlighting your desired computer skill level using the arrow buttons on the control pad and press the "A" or "Z" button to select.



You will automatically be returned to the main menu after making your selection. If you wish to leave the settings at default, use the up and down arrows on the control pad to highlight "BACK TO THE MAIN MENU" and press the "A" or "Z" button to return to the main menu.



RESPONSE ENTRY OPTIONS

Choose between "COMPUTER ASSISTED RESPONSES", "EXACT SPELLING REQUIRED" and "LOOSE SPELLING ACCEPTED" entry options by highlighting

your desired response entry option using the arrow buttons on the control pad and press the "A" or "Z" button to select. You will automatically be returned to the main menu after making your selection. If you wish to leave the settings at default, use the up and down arrow buttons on the control pad to highlight "BACK TO THE MAIN MENU" and press the "A" or "Z" button to return to the main menu. If you choose "Exact Spelling Required" or "Loose Spelling Accepted", you will be required to enter a complete response, while if you choose "Computer Assisted Responses" you may be able to match your response to an entry in the database after entering only a few letters.

QUESTION DIFFICULTY LEVEL

Choose between "Easy Questions Only", "Easy and Average Questions" and "Easy, Average and Expert" by highlighting your desired question difficulty using the arrow buttons on the control pad and press the "A" or "Z" button to select. You will automatically be taken back to the main menu. If you choose to not make changes to the settings you can use the up and down arrows on the control pad to highlight "BACK TO THE MAIN MENU" and press the "A" or "Z" button to return to the main menu.



While there are over 4,000 answers and questions in the database, about 1/3 of them are easy, 1/3 are average, and 1/3 are expert. In order to have the game select categories for you from the full database, you must choose the "Easy, Average and Expert" question difficulty level.

PLAYER SETTINGS

Change your players from computer to human and vice versa, select your player's appearance and enter your player name by highlighting "Player Settings" using the arrow buttons on the control pad then press the "A" or "Z" button to select.



Highlight player to configure by using the arrow buttons on the control pad and press the "A" or "Z" button to toggle between computer and human players. Once you have the desired player settings, use the arrows on the control pad to highlight "DONE" and press the "A" or "Z" button to return to finish customizing your player.

Pick and name your player by using the left and right arrows buttons on the control pad to highlight your player and press the "A" or "Z" button to select. You will be prompted to enter a name for your player. Use the arrow buttons on the control pad to highlight each letter you wish to select and press the "A" button to select. Once you have the desired name of your player highlight "ENTER" on the virtual keyboard by using the arrow buttons on the control pad and press the "A" button to return to the configuration screen and configure your next player. Once all contestants have been configured, you will automatically return to the main menu.

NOTE Jeopardy!® N64 will detect if control sticks are not plugged in and will automatically assign a computer player for those contestants. Controllers must be in the controller port at the time of loading game in order for the system to recognize computer or human players.

SOUND SETTINGS



Change the volume of Jeopardy! background music and sound effects by highlighting either "MUSIC" or "SOUND EFFECTS" using the up and down arrow buttons on the control pad. Increase / decrease

volumes by using the left and right arrows on the control pad, left decreasing the volume and right increasing the volume. Once you have the desired volume settings use the up and down arrow buttons on the control pad to highlight "BACK TO THE MAIN MENU" and press the "A" or "Z" button to return to the main menu.

RESPONSE DISPLAY SETTINGS

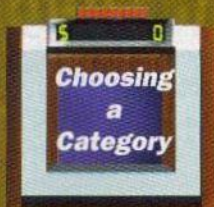
Choose between "DISPLAYS CORRECT RESPONSE" and "DOES NOT DISPLAY CORRECT RESPONSE" by using the arrow buttons on the control pad to highlight your desired option

and press the "A" or "Z" button to select. You will automatically be taken back to the main menu. If you choose to not make changes to the settings you can use the up and down arrows on the control pad to highlight "BACK TO THE MAIN MENU" and press the "A" or "Z" button to return to the main menu.

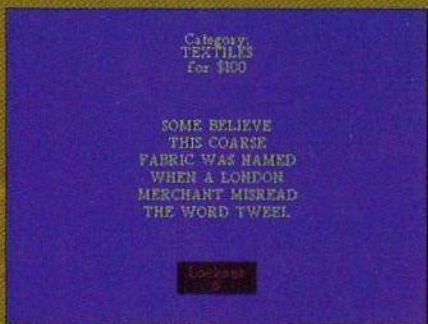


ON WITH THE SHOW

To begin the game highlight "On With the Show" using the arrow buttons on the control pad and press "A" or "Z" button to select. The categories will be displayed to you one by one. Once this is finished you may begin the game. If you choose to skip the category display, you can press the "A" button to skip.



Your cursor will start out in the upper left corner of the board. Move the arrow buttons on the control pad to the desired amount and category. The categories are displayed on the right hand side of the screen and will change simultaneously as you move arrow buttons on the control pad to a different category. Select the desired category and amount by pressing the "A" button.



After the answer is displayed you will have a buzzer lockout period of 10 seconds to have time to read the answer. After this lockout period, all three players will have 15 seconds to buzz in by using the "A" or "Z" button.

If more than one player is playing and the first to buzz in responds incorrectly, the remaining players will have 5 seconds to buzz in and try to respond correctly.



After buzzing in you will be prompted to a screen that contains a virtual keyboard. This keyboard will allow you to select letters to spell out your response. Use the arrow buttons on the control pad to highlight the letters and use the "A" button to select. Once you have finished spelling your response highlight "ENTER" on the keyboard and press the "A" button to select.

Once you have finished spelling your response highlight "ENTER" on the keyboard and press the "A" button to select.

If you have chosen the "Computer Assisted Responses" option, as you select each letter you will notice for each letter chosen the database is searched and any matching words will appear right above the virtual keyboard. If your response happens to match one of the words that pop up in the database search, and is the response you desire, simply highlight the "ENTER" button on the keyboard with the arrow buttons on the control pad and press "A" button to select or use the shortcut "Z" button.

(For more shortcut buttons, please refer to the shortcut section of this manual)





- ✓ **The "Z" button is considered a shortcut button for entering long words. If you see your word in the pop-up database search, you can press the "Z" button to enter that word. Do not use the "Z" button to select letters; it will submit either what you have already selected or the word up in the database search pop-up menu.**

- ✓ **If you have started to enter a word that you want to erase and start over, press the "L" button, this will completely erase any response you have started to enter.**

- ✓ **Press the "R" button on the controller to move forward one word. This is used to save time when entering a multiple word response.**

- ✓ **"C" buttons are used as short cut buttons for miscellaneous characters such as periods, dashes, commas and spaces.**
 - Up - Enters " - "**
 - Down - Enters " , "**
 - Left - Enters " . "**
 - Right - Enters " SPACE "**

- ✓ **In the Main Menu, the "B" button can be used to go "BACK TO THE MAIN MENU". The "B" button can also be used to backspace when entering letters on the virtual keyboard.**



Daily Doubles are randomly hidden chances to wager money against the category and answer it lies under. In the first Jeopardy! round the board will contain one Daily Double. Double Jeopardy! contains two. If you pick a category and dollar figure containing the

Daily Double, you are the only player who can respond. A new screen will appear telling you how much each player has in the bank, the minimum amount you can wager and the maximum amount you can wager. Use the arrow keys on the control pad to highlight the amount you wish to wager and press the "A" button to select. Once you have finished entering your wager use the arrow keys on the control pad to highlight "Enter" and press the "A" or "Z" button. You will be given 10 seconds to read the Daily Double clue before the clock begins its 60-second countdown. Use the virtual keyboard to enter your response.

The second round of the game is Double Jeopardy!. Double Jeopardy! is played exactly the same way as round one except the dollar amounts are doubled and the board will contain two Daily Doubles.



In the Final Jeopardy! round, you will be given one category that you can wager a desired amount on. You must have money in your bank to participate in Final Jeopardy!. Each player will be able to wager an amount for the chance to win the game.

Each player enters his or her wager and response individually, as prompted by the computer. A new screen will appear showing your player status. Use the arrow keys on the control pad to highlight the amount you wish to wager and press the "A" button to select. Once you have finished entering your wager use the arrow keys on the control pad to highlight "Enter" and press the "A" button. The answer will be revealed and you will have 10 seconds to read it and 60 more seconds to enter your response.

GameTek Technical Support

If you have technical difficulties with this or any GameTek product, you can reach our Customer Service/Technical Support Group at the following numbers.

Phone: 1-910-222-5190

9am to 5pm Eastern Standard time

Fax: 1-910-229-1635

24 hours a day, 7 days a week

OR you can write to:

GameTek Technical Support Center

2727 Tucker Street Ext.

Burlington, NC 27215

Attn: GameTek Technical Support

If you have a modem, you can reach us at the following:

America Online

You can send e-mail to [Gametek]

Internet: You can contact GameTek by sending

Internet E-mail to: webmaster@sf.gametek.com

TO ORDER OTHER GAMETEK PRODUCTS

Call Toll Free 1-800-GAMETEK, (1-800-426-3835)

Visa and Mastercard accepted.

TO VISIT OUR WORLD WIDE WEBSITE, select

"<http://www.gametek.com>" or you may ftp to

"[ftp.gametek.com](ftp://gametek.com)"

GameTek Limited Warranty

GameTek, Inc. warrants to the original consumer/purchaser of this GameTek software or console product that the medium on which this computer program or cartridge is recorded is free from defects in materials and workmanship for a period of (90) days from the date of purchase. This GameTek software or cartridge is sold "as is", without express or implied warranty of any kind, and GameTek is not liable for any losses or damages of any kind resulting from use of this program or cartridge. GameTek agrees for a period of ninety (90) days to either repair or replace, at its option, free of charge, any GameTek software or cartridge product, postage paid, with proof of date of purchase, at its Corporate Offices: GameTek, Inc., 3 Harbor Drive, Suite 110, Sausalito, CA 94965 • (415) 289-0220.

This warranty is not applicable to normal wear and tear. This warranty shall not be applicable and shall be void if the defect in the GameTek software or cartridge product has arisen through abuse, unreasonable use, mistreatment or neglect. This warranty is in lieu of all other warranties and no other representations or claims of any nature shall be binding on or obligate GameTek. Any implied warranties applicable to this GameTek software or cartridge product, including warranties of merchantability and fitness for a particular purpose, are limited to the ninety (90) day period described above. In no event will GameTek be liable for any special incidental or consequential damages resulting from possession, use or malfunction of the GameTek software or cartridge product.

Some states do not allow limitations on the duration of an implied warranty or exclusions of limitations of incidental or consequential damages, so the above limitations and/or exclusions of liability may not apply to you. This warranty gives you specific rights, and you may also have other rights which vary from state to state.



JEPARDY!

\$400

\$600



JEPARDY!

\$800



JEPARDY!